

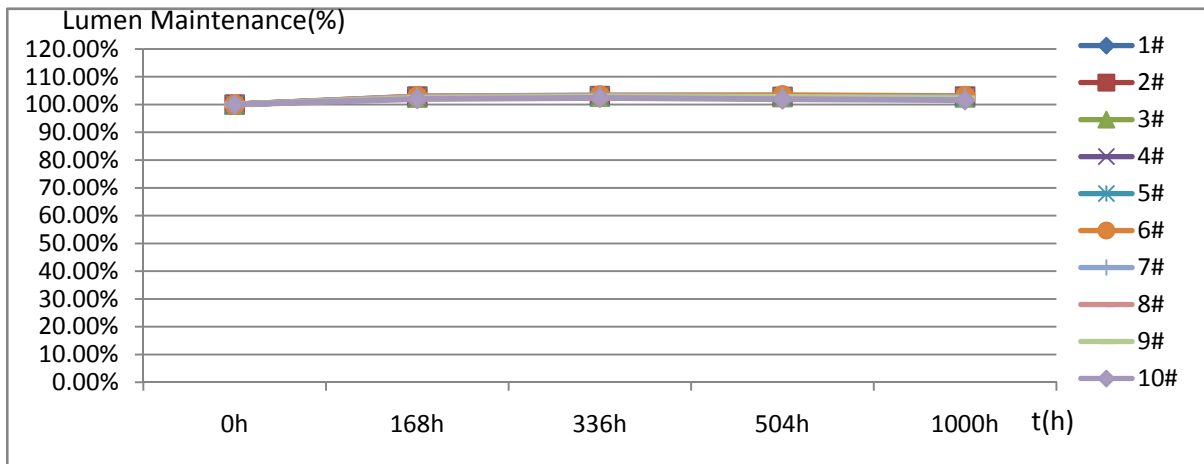
## 检测报告(内部)

报告编号: LAB0203007-20

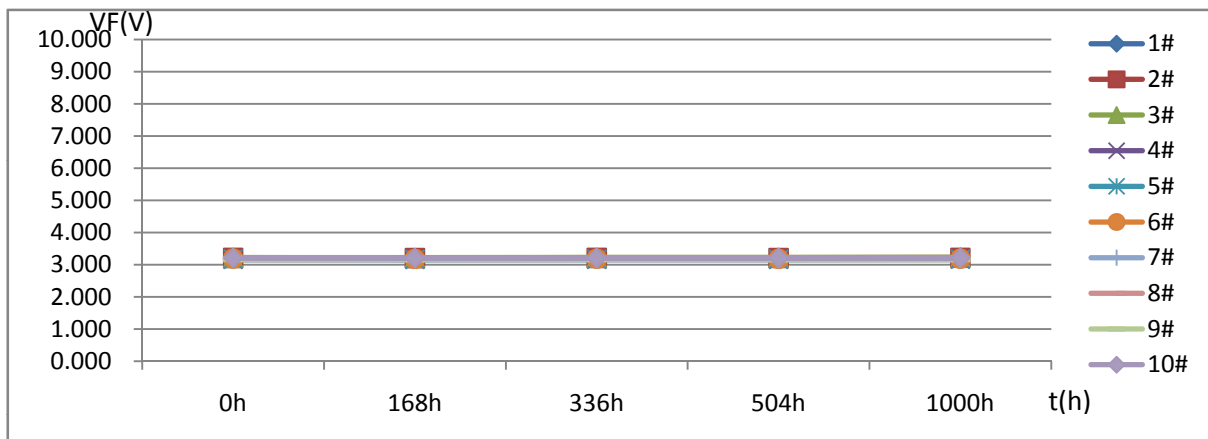
第 1 页共 5 页

1. 客户名称: 中小功率及EMC产品部/李祖俊
2. 样品编号: 1#~10#
3. 产品规格/型号: RF-WMHI32DS-FF-J/SC17-200104010
4. 检测时间: 2020. 03. 05~2020. 04. 16
5. 检测设备: 高低温交变湿热试验箱(131197); HAAS-1200快速光谱辐射计(G113724CS1321116);  
 FLUKE万用表(34700492WS); 电热鼓风干燥箱(TST1005028); 回流焊炉(N0842010);  
 显微镜(MT 4X); DC POWER SUPPLY(010908164); DSX500光学电子显微镜(4B43960)
6. 环境条件: (22~28) °C, (30~70) %RH
7. 检测依据标准: 环境试验 第2部分: 试验方法 试验Cab: 恒定湿热试验 GB/T 2423.3-2016,  
 LED的测量 CIE127: 2007
8. 检测项目: 高温高湿老化试验
9. 检测条件: 预处理: 125°C烘烤2H, 回流焊1次(参照SMT回流焊说明WI-R00-004文件)  
 60°C/90%RH, 老化时间1000H, 老化电流150mA, 测试电流150mA,  
 积分球2 $\pi$ 测试, 测试点: 0h, 168h, 336h, 504h, 1000h

$\Phi$  (1m) 试验变化图



VF (V) 试验变化图

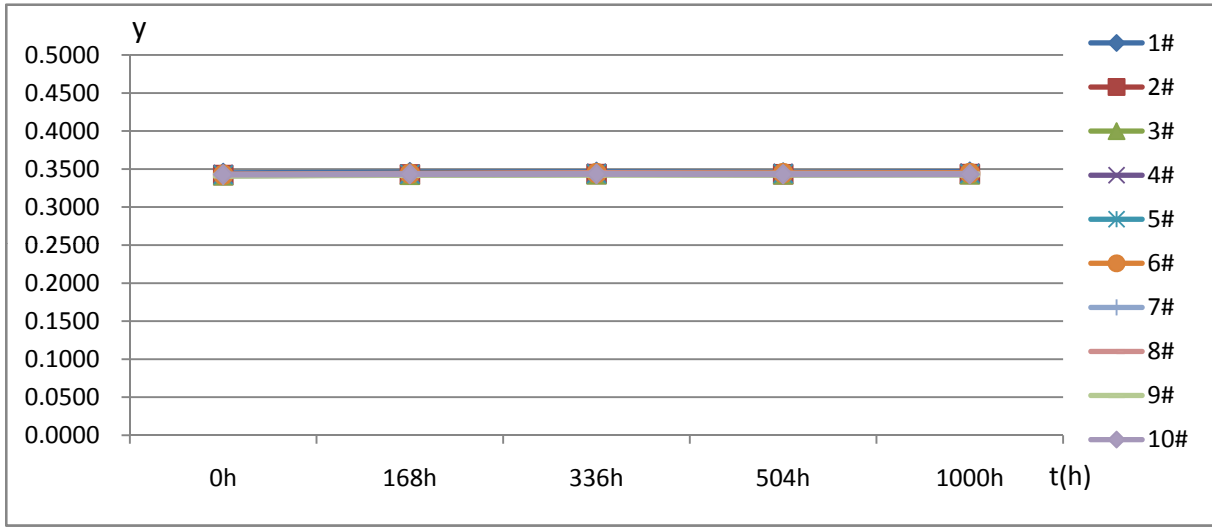


检测: 黄凯 2020. 04. 19      审核: 樊考辉 2020. 04. 19      批准: 张列祥 2020. 04. 20



# 检测报告(内部)

y试验变化图



序号	Φ (1m)					Lumen Maintenance (%)				
	0h	168h	336h	504h	1000h	0h	168h	336h	504h	1000h
1#	67.59	69.22	69.46	68.99	69.17	100.00%	102.41%	102.77%	102.07%	102.34%
2#	66.23	68.12	68.26	68.04	68.12	100.00%	102.85%	103.07%	102.73%	102.85%
3#	67.22	68.89	69.11	69.10	68.93	100.00%	102.48%	102.81%	102.80%	102.54%
4#	67.63	69.34	69.70	69.55	69.46	100.00%	102.53%	103.06%	102.84%	102.71%
5#	66.98	68.77	68.96	68.81	68.65	100.00%	102.67%	102.96%	102.73%	102.49%
6#	67.97	69.92	70.20	70.25	70.03	100.00%	102.87%	103.28%	103.35%	103.03%
7#	66.72	68.59	68.85	68.59	68.51	100.00%	102.80%	103.19%	102.80%	102.68%
8#	67.16	68.87	69.10	68.90	68.49	100.00%	102.55%	102.89%	102.59%	101.98%
9#	67.16	68.74	69.05	68.98	68.67	100.00%	102.35%	102.81%	102.71%	102.25%
10#	68.14	69.50	69.77	69.43	69.20	100.00%	102.00%	102.39%	101.89%	101.56%
Max	68.14	69.92	70.20	70.25	70.03	100.00%	102.87%	103.28%	103.35%	103.03%
Min	66.23	68.12	68.26	68.04	68.12	100.00%	102.00%	102.39%	101.89%	101.56%
Avg	67.28	69.00	69.25	69.06	68.92	100.00%	102.55%	102.92%	102.65%	102.44%

序号	VF (V)					ΔVF (V)			
	0h	168h	336h	504h	1000h	168h	336h	504h	1000h
1#	3.204	3.195	3.198	3.202	3.200	-0.009	-0.006	-0.002	-0.004
2#	3.210	3.207	3.210	3.209	3.213	-0.003	0.000	-0.001	0.003
3#	3.209	3.209	3.214	3.214	3.220	0.000	0.005	0.005	0.011
4#	3.167	3.164	3.166	3.165	3.169	-0.003	-0.001	-0.002	0.002
5#	3.171	3.166	3.169	3.168	3.169	-0.005	-0.002	-0.003	-0.002
6#	3.192	3.183	3.185	3.183	3.186	-0.009	-0.007	-0.009	-0.006
7#	3.183	3.179	3.181	3.181	3.183	-0.004	-0.002	-0.002	0.000
8#	3.177	3.174	3.176	3.175	3.178	-0.003	-0.001	-0.002	0.001
9#	3.166	3.164	3.166	3.164	3.166	-0.002	0.000	-0.002	0.000
10#	3.209	3.204	3.206	3.205	3.207	-0.005	-0.003	-0.004	-0.002

# 检测报告(内部)

报告编号: LAB0203007-20

第 4 页共 5 页

序号	IF (mA)				
	0h	168h	336h	504h	1000h
1#	150.00	149.90	149.90	149.70	150.00
2#	149.90	149.90	149.90	149.90	150.00
3#	150.00	149.90	149.90	149.90	150.00
4#	150.00	149.90	149.90	149.90	150.00
5#	150.00	149.90	149.90	149.90	150.00
6#	150.00	149.90	149.90	149.90	150.00
7#	150.00	149.90	149.90	149.90	150.00
8#	150.00	149.90	149.90	149.90	150.00
9#	150.00	149.90	149.90	149.90	150.00
10#	149.90	149.90	149.90	149.90	150.00

序号	IR (μA)				
	0h	168h	336h	504h	1000h
1#	0.000	0.000	0.000	0.000	0.000
2#	0.000	0.000	0.000	0.000	0.000
3#	0.000	0.000	0.000	0.000	0.000
4#	0.000	0.000	0.000	0.000	0.000
5#	0.000	0.000	0.000	0.000	0.000
6#	0.000	0.000	0.000	0.000	0.000
7#	0.000	0.000	0.000	0.000	0.000
8#	0.000	0.000	0.000	0.000	0.000
9#	0.000	0.000	0.000	0.000	0.000
10#	0.000	0.000	0.000	0.000	0.000

序号	x					Δx			
	0h	168h	336h	504h	1000h	168h	336h	504h	1000h
1#	0.3290	0.3294	0.3296	0.3288	0.3297	0.0004	0.0006	-0.0002	0.0007
2#	0.3300	0.3304	0.3305	0.3304	0.3306	0.0004	0.0005	0.0004	0.0006
3#	0.3270	0.3272	0.3274	0.3274	0.3274	0.0002	0.0004	0.0004	0.0004
4#	0.3293	0.3289	0.3297	0.3296	0.3298	-0.0004	0.0004	0.0003	0.0005
5#	0.3263	0.3266	0.3266	0.3268	0.3267	0.0003	0.0003	0.0005	0.0004
6#	0.3274	0.3278	0.3282	0.3281	0.3282	0.0004	0.0008	0.0007	0.0008
7#	0.3304	0.3308	0.3310	0.3309	0.3309	0.0004	0.0006	0.0005	0.0005
8#	0.3282	0.3284	0.3291	0.3286	0.3285	0.0002	0.0009	0.0004	0.0003
9#	0.3258	0.3261	0.3262	0.3263	0.3262	0.0003	0.0004	0.0005	0.0004
10#	0.3283	0.3284	0.3284	0.3282	0.3281	0.0001	0.0001	-0.0001	-0.0002

# 检测报告(内部)

报告编号: LAB0203007-20

第 5 页共 5 页

序号	y					$\Delta y$			
	0h	168h	336h	504h	1000h	168h	336h	504h	1000h
1#	0.3446	0.3457	0.3461	0.3452	0.3463	0.0011	0.0015	0.0006	0.0017
2#	0.3421	0.3430	0.3435	0.3431	0.3435	0.0009	0.0014	0.0010	0.0014
3#	0.3417	0.3424	0.3429	0.3429	0.3430	0.0007	0.0012	0.0012	0.0013
4#	0.3433	0.3435	0.3447	0.3446	0.3449	0.0002	0.0014	0.0013	0.0016
5#	0.3424	0.3433	0.3438	0.3439	0.3439	0.0009	0.0014	0.0015	0.0015
6#	0.3426	0.3439	0.3446	0.3446	0.3447	0.0013	0.0020	0.0020	0.0021
7#	0.3416	0.3427	0.3432	0.3430	0.3431	0.0011	0.0016	0.0014	0.0015
8#	0.3424	0.3432	0.3445	0.3439	0.3437	0.0008	0.0021	0.0015	0.0013
9#	0.3413	0.3423	0.3427	0.3429	0.3428	0.0010	0.0014	0.0016	0.0015
10#	0.3427	0.3434	0.3436	0.3433	0.3433	0.0007	0.0009	0.0006	0.0006

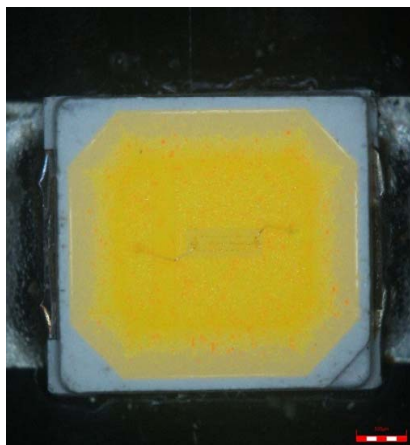
单颗LED判定基准:

项目	min	max
Lumen Maintenance (%)	90%	110%
$\Delta VF$	-0.5	0.5
$\Delta x$	-0.01	0.01
$\Delta y$	-0.015	0.015
IR( $\mu A$ )	/	10

外观无胶裂, 变黄, 发黑等现象

经过1000h高温高湿老化试验, 全部样品各项参数均在判定标准范围内。

外观描述: 全部样品外观正常



试验结果: 合格

备注: 检测结果只对本次样品负责。

.....结束.....