

1.4 Product Selection Table 产品型号

Modle NO.	CCT	Center		
		code	x	y
RF-W2HP32DS-AF-I3	2700K	27M	0.4711	0.4273
RF-W3HP32DS-AF-I3	3000K	30M	0.4464	0.4082
RF-W35HP32DS-AF-I3	3500K	35M	0.4090	0.3935
RF-W4HP32DS-AF-I3	4000K	40M	0.3800	0.3800
RF-W5HP32DS-AF-I3	5000K	50M	0.3460	0.3590
RF-W57HP32DS-AF-I3	5700K	57M	0.3294	0.3424
RF-W61HP32DS-AF-I3	6100K	65N	0.3192	0.3471
RF-W6HP32DS-AF-I3	6500K	65M	0.3206	0.3494

1.5 Package Dimension 封装尺寸

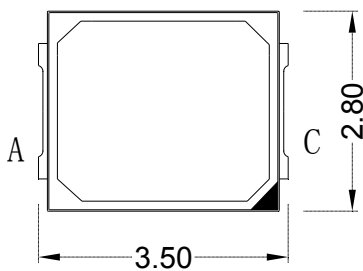


Fig.1-1 Top view 正面视图

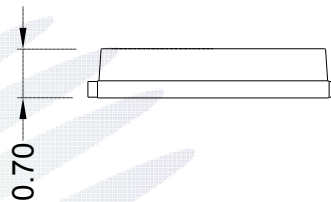


Fig.1-2 Side view 侧面视图

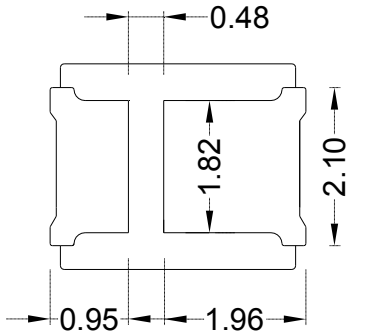


Fig.1-3 Bottom view 背面视图



Polarity

A: anode

C: cathode

Fig.1-4 Polarity 极性

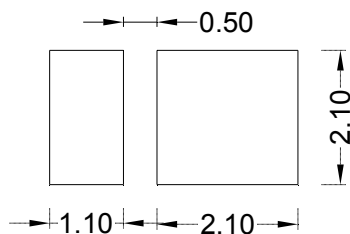


Fig.1-5 Soldering patterns 推荐焊盘

Notes 备注 :

1. All dimensions units are millimeters. 所有尺寸标注单位为 mm
2. All dimensions tolerances are $\pm 0.05\text{mm}$ unless otherwise noted. 除特别标注外, 所有尺寸公差为 $\pm 0.05\text{mm}$